



MEGT
INSTITUTE

2018
International
Students
Course Guide
Melbourne and Sydney



Welcome to MEGT Institute

Established in 1982, MEGT (Australia) Ltd has over 35 years of experience in education, training and employment.

MEGT Institute is a Registered Training Organisation and specialist provider of nationally accredited Early Childhood Education and Care qualifications. Each year, our Melbourne and Sydney campuses welcome students from over 30 different countries.

The MEGT Institute difference

- MEGT Institute is widely recognised as a specialist training provider and we have a strong industry-wide reputation for quality graduates
- We provide practical, hands-on training to give you the skills you need to succeed
- We have a network of over 500 registered childcare centres, so we can help you find the most suitable work placement to get you well on the way to a rewarding career in children's services
- Our industry-experienced trainers are highly qualified, and passionate about ensuring you achieve your academic and career goals
- Our flexible timetable options allow you to work part-time in a childcare centre while you study

Our campuses

Our Melbourne and Sydney Campuses are centrally located in the heart of each CBD, with public transport, cafes, restaurants and shops all close by.

Both of our modern campuses have:

- Spacious student common rooms with free Wi-Fi
- Computer labs with plenty of computers available for students
- Purpose-built Play Session training centre
- Onsite kitchen and dining facilities

Monthly social events organised by our Student Services team give you the opportunity to meet other students, make friends, share your learning experiences and explore your new city.

“

I have learned a lot from my trainers and it is easy to ask them questions. MEGT Institute provides a nice environment for student to study. I have learned how to interact and communicate with children and my future goal is to open up a centre and further my education.

— Tenae Lang

”



Certificate III in Early Childhood Education and Care

Course code: CHC30113 CRICOS Code: 082378J

This accredited qualification covers the skills and knowledge you need to work in the early childhood services, including child development, education and programming.

The course includes a compulsory 120 hours of work placement at a registered childcare centre that we arrange for you, and you will be guided and supported by our trainers during the whole process.

Successful completion of the course will allow you to apply for roles such as:

- Early Childhood Educator
- Childcare Assistant
- Family Day Care Educator
- Out of School Hours Care (OSHC) Assistant
- Nanny

Delivery Mode	Location	Duration	Timetable	Work placement
On campus, full-time blended	Sydney or Melbourne	33 weeks, including 25 weeks of tuition and up to 8 weeks break	2 days per week from 8:30AM to 4:45PM (days may vary per each intake); 5 hours of non-structured online self-study per week, supported by trainers	Includes 15 days (8 hours per day; total of 120 hours), 3 days per week over 5 work placement weeks

Units of competency

Unit code	Unit title	Unit code	Unit title
CHCPRT001	Identify and respond to children and young people at risk	HLTWHS001	Participate in Workplace Health and Safety
CHCECE002	Ensure the health and safety of children	HLTAID004	Provide an emergency first aid response in an education and care setting*
CHCECE003	Provide care for children	CHCECE009	Use an approved learning framework to guide practice
CHCECE004	Promote and provide healthy food and drinks	CHCECE005	Provide care for babies and toddlers
CHCLEG001	Work legally and ethically	CHCECE001	Develop cultural competence
CHCECE010	Support the holistic development of children in early childhood	CHCDIV002	Promote Aboriginal and/or Torres Strait Islander cultural safety
CHCECE007	Develop positive and respectful relationships with children	CHCDIV001	Work with diverse people
CHCECE011	Provide experiences to support children's play and learning	CHCECE006	Support behaviour of children and young people
CHCECE013	Use information about children to inform practice	CHCECE012	Support children to connect with their world

* This unit is delivered by St John Ambulance Australia Inc. or by Medilife in partnership with MEGT Institute. Upon successful completion of this unit, students are issued with a Statement of Attainment, which will be used as credit towards

your qualification at no additional cost. If students fail to attend all or part of this unit, they will not be able to participate and will need to complete an external First Aid course at their expense.

Diploma of Early Childhood Education and Care

Course code: CHC50113 CRICOS Code: 082379G

Develop the skills essential to becoming a successful leader in children's services and learn how to design and implement curriculum.

This course will provide you with employment opportunities in long day care, early intervention services, schools and other specialised services.

Upon successful completion, you will be able to apply for roles such as:

- Group Leader in a Childcare Centre
- Centre Manager/Director
- Children's Services Manager
- Child Development Worker

Delivery Mode	Location	Duration	Timetable	Work placement
On campus, full time blended	Sydney or Melbourne	92 weeks, including 72 weeks of tuition and up to 20 weeks break	2 days per week from 8:30AM to 4:45PM (days may vary per each intake); 5 hours of non-structured online self-study per week, supported by trainers	Includes 42 days (8 hours per day; total of 336 hours), 3 days per week over 14 work placement weeks

Units of competency

Unit code	Unit title	Unit code	Unit title
CHCPRT001	Identify and respond to children and young people at risk	CHCECE018	Nurture creativity in children
CHCECE002	Ensure the health and safety of children	HLTWHS003	Maintain Workplace Health and Safety
CHCLEG001	Work legally and ethically	CHCECE019	Facilitate compliance in an education and care service
HLTAID004	Provide an emergency first aid response in an education and care setting*	CHCDIV001	Work with diverse people
CHCECE003	Provide care for children	CHCECE017	Foster the holistic development and wellbeing of the child in early childhood
CHCECE004	Promote and provide healthy food and drinks	CHCECE018	Nurture creativity in children
CHCECE005	Provide care for babies and toddlers	CHCECE020	Establish and implement plans for developing cooperative behaviour
CHCECE007	Develop positive and respectful relationships with children	CHCECE026	Work in partnership with families to provide appropriate education and care for children
CHCECE001	Develop cultural competence	CHCECE021	Implement strategies for the inclusion of all children
CHCDIV002	Promote Aboriginal and/or Torres Strait Islander cultural safety	CHCECE022	Promote children's agency
CHCECE009	Use an approved learning framework to guide practice	CHCECE023	Analyse information to inform learning
CHCECE016	Establish and maintain a safe and healthy environment for children	CHCECE024	Design and implement the curriculum to foster children's learning and development
CHCECE025	Embed sustainable practices in service operations	BSBRES401	Analyse and present research information
HLTWHS003	Maintain Workplace Health and Safety	BSBLED401	Develop teams and individuals
CHCECE019	Facilitate compliance in an education and care service	CHCMGT003	Lead the work team
CHCDIV001	Work with diverse people	CHCPOL002	Develop and implement policy
CHCECE017	Foster the holistic development and wellbeing of the child in early childhood		

* This unit is delivered by St John Ambulance Australia Inc. or by Medilife in partnership with MEGT Institute. Upon successful completion of this unit, students are issued with a Statement of Attainment, which will be used as credit towards

your qualification at no additional cost. If students fail to attend all or part of this unit, they will not be able to participate and will need to complete an external First Aid course at their expense.

Certificate III and Diploma of Early Childhood Education and Care

Course code: CHC30113 and CHC50113 CRICOS Code: 082378J and 082379G

Develop an in-depth knowledge in children's services through our combined CHC30113 Certificate III in Early Childhood Education and Care. Then progress to our CHC50113 Diploma of Early Childhood Education and Care to boost your career prospects with two nationally accredited qualifications.

Upon successful completion, you will be able to apply for roles such as:

- Group Leader in a Childcare Centre
- Centre Manager/Director
- Children's Services Manager
- Child Development Worker

Delivery Mode	Location	Duration	Timetable	Work placement
On campus, full time blended	Sydney or Melbourne	104 weeks, including 82 weeks of tuition and up to 22 weeks break	2 days per week from 8:30AM to 4:45PM (days may vary per each intake); 5 hours of non-structured online self-study per week, supported by trainers	Includes 48 days (8 hours a day; total of 384 hours), 3 days per week over 16 work placement weeks

Units of competency

Unit code	Unit title	Unit code	Unit title
BSBLED401	Develop teams and individuals	CHCECE019	Facilitate compliance in an education and care services
CHCLEG001	Work legally and ethically	CHCECE020	Establish and implement plans for developing cooperative behaviour
CHCECE001	Develop cultural competence	CHCECE021	Implement strategies for the inclusion of all children
CHCECE002	Ensure the health and safety of children	CHCECE022	Promote children's agency
CHCECE003	Provide care for children	CHCECE023	Analyse information to inform learning
CHCECE004	Promote and provide healthy food and drinks	CHCECE024	Design and implement the curriculum to foster children's learning and development
CHCECE005	Provide care for babies and toddlers	CHCECE025	Embed sustainable practices in service operations
CHCECE006	Support behaviour of children and young people	CHCECE026	Work in partnership with families to provide appropriate education and care for children
CHCECE007	Develop positive and respectful relationships with children	BSBRES401	Analyse and present research information
CHCECE009	Use an approved learning framework to guide practice	CHCMGT003	Lead the work team
CHCECE010	Support the holistic development of children in early childhood	CHCPOL002	Develop and implement policy
CHCECE011	Provide experiences to support children's play and learning	CHCPRT001	Identify and respond to children and young people at risk
CHCECE012	Support children to connect to their world	HLTAID004	Provide an emergency first aid response in an education and care setting*
CHCECE013	Use information about children to inform practice	CHCDIV002	Promote Aboriginal and/or Torres Strait Islander cultural safety
CHCECE016	Establish and maintain a safe and healthy environment for children	CHCDIV001	Work with diverse people
CHCECE017	Foster the holistic development and wellbeing of the child in early childhood	HLTWHS001	Participate in Workplace Health and Safety
CHCECE018	Nurture creativity in children		

“

My course at MEGT Institute reinforced how important it is to help children grow in an environment that builds confidence, security and happiness. My trainers help me become passionate about what I am learning and are always happy to answer questions and offer advice.

– Adriana Willers

”

Entry requirements

To undertake an Early Childhood Education and Care qualification with MEGT Institute, you must:

- Be an international student
- Be over 18 years of age
- Demonstrate English language proficiency at IELTS 5.5 (no band lower than 5.0) or equivalent for entry into Certificate III course
- Demonstrate IELTS 6.0 (no band lower than 5.5) or equivalent for entry into Diploma course
- Satisfy a Working with Children check. Our Student Services team will assist you with this during your orientation week

University Pathways

MEGT Institute has ongoing relationships with many universities and private colleges in Victoria and New South Wales, and you may be granted credit points or exemptions towards a Bachelor Degree when you study with us.

Students completing the CHC50113 Diploma of Early Childhood Education and Care with MEGT Institute are:

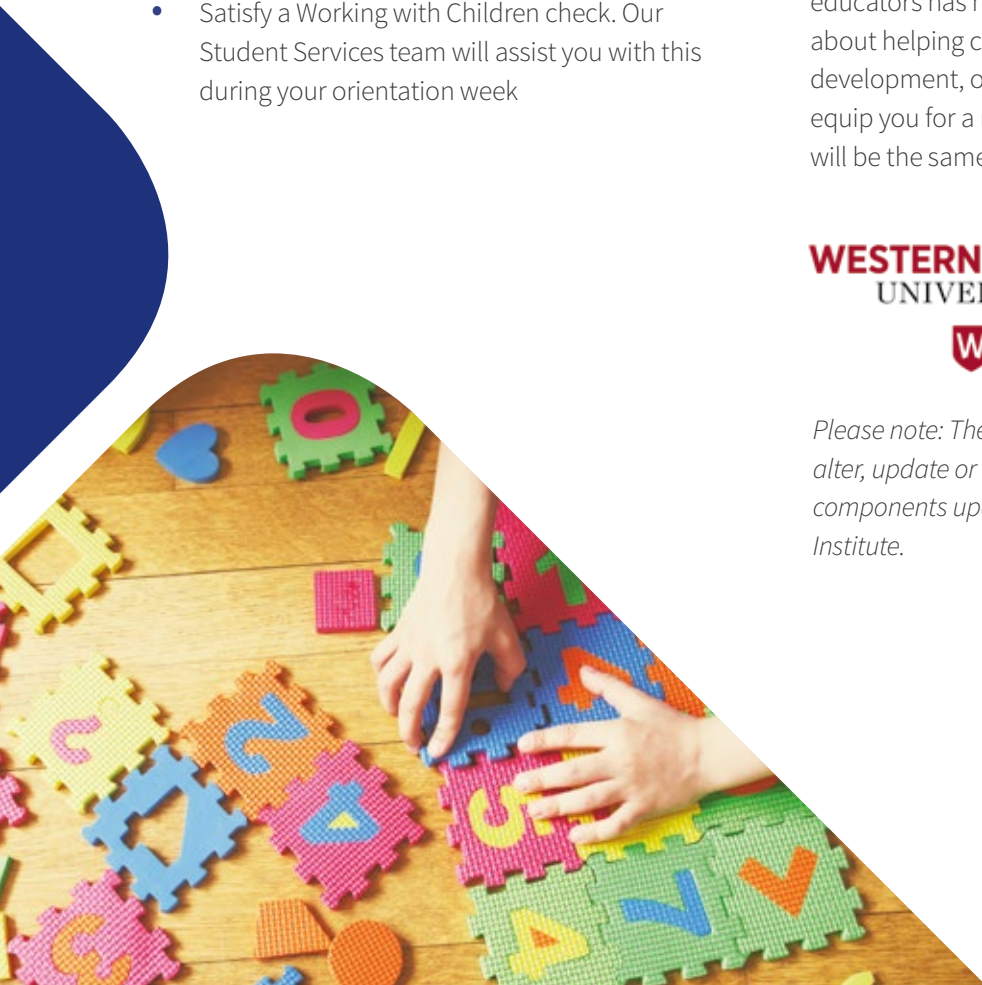
- Eligible for entry into the Australian Catholic University (ACU) Bachelor of Education (Birth to 5 years) with up to 80 credit points, and Bachelor of Education (Early Childhood and Primary) with up to 60 credit points. *Please note: total credit points awarded are determined by ACU and dependent on specific units undertaken.*
- Guaranteed admission and credit equivalent to 6 months full-time study towards the Western Sydney University Bachelor of Arts (Pathway to Teaching, Birth to 5 years, Birth 12 years). This is equivalent to 40 credit points of the 240 total credit points required for completion of this degree.

Our training focuses on developing students' practical skills and knowledge to help give you a competitive edge in the job/careers market.

The demand for good quality early childhood educators has never been greater. If you are passionate about helping children with their social and creative development, our programs and qualifications will equip you for a rewarding career where no two days will be the same!



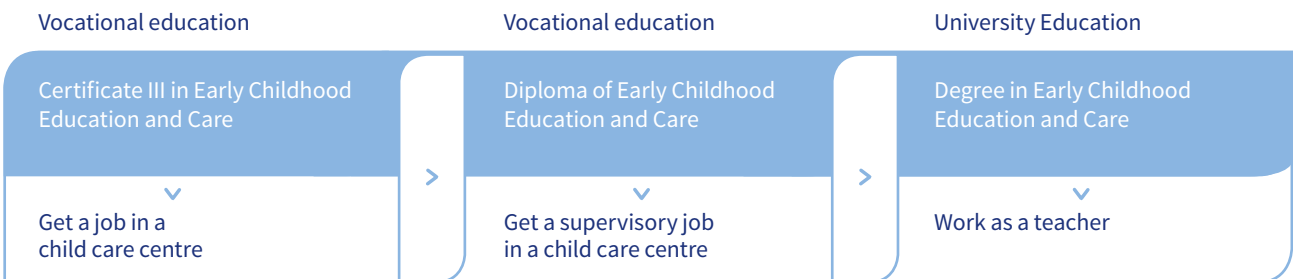
Please note: The universities reserve the right to amend, alter, update or discontinue any aspect of the course components upon giving reasonable notice to MEGT Institute.



Sample study pathway in Australia



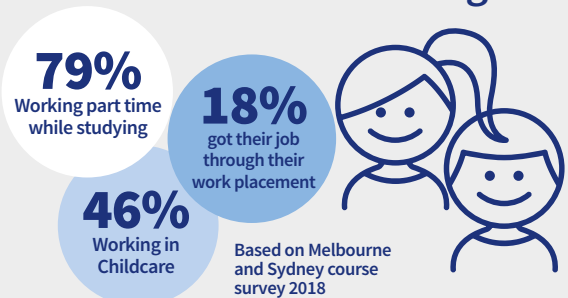
Sample career pathway in Australia



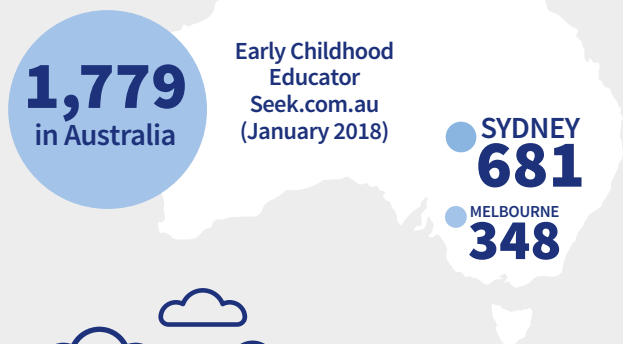
LATEST WORK FACTS



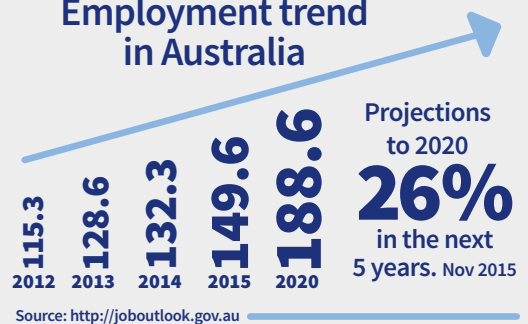
How many of our students are working?



How many JOBS are available?



Employment trend in Australia



Our Childcare Centre Network

500

Number of child care centres MEGT Institute works with

How much you could EARN



<http://joboutlook.gov.au> January 2018



Sydney City Campus

10 Quay Street
Sydney NSW 2000
Australia
Phone: +612 9211 4161
Fax: +612 9211 4899

Melbourne City Campus

Level 3, 55 Swanston Street
Melbourne VIC 3000
Australia
Phone: +613 9639 0000
Fax: +613 9650 6476

megtinstitute.edu.au

13 6963

